

THE PREVIOUSLY UNDESCRIBED FEMALE OF *LIPHYRA BRASSOLIS BOUGAINVILLEANUS* SAMSON & SMART (LEPIDOPTERA: LYCAENIDAE: LIPHYRINAE)

C.J. MULLER¹ and R. MAYO²

¹ P.O. Box 228, Dural, N.S.W., 2158

² 62 Fletcher St, Wallsend, N.S.W., 2287

Abstract

The previously unknown female of the lycaenid butterfly, *Liphyra brassolis bougainvilleanus* is described and is recorded from the Solomon Islands for the first time.

Introduction

Liphyra brassolis Westwood is represented by nine subspecies over a wide range, from Sikkim and Assam through South-East Asia to Papua New Guinea, the Solomon Islands and Australia (Samson and Smart 1980). *L. b. bougainvilleanus* has been recorded previously from only a single male taken at Bougainville in 1904 (Samson and Smart 1980).

Liphyra brassolis bougainvilleanus Samson and Smart

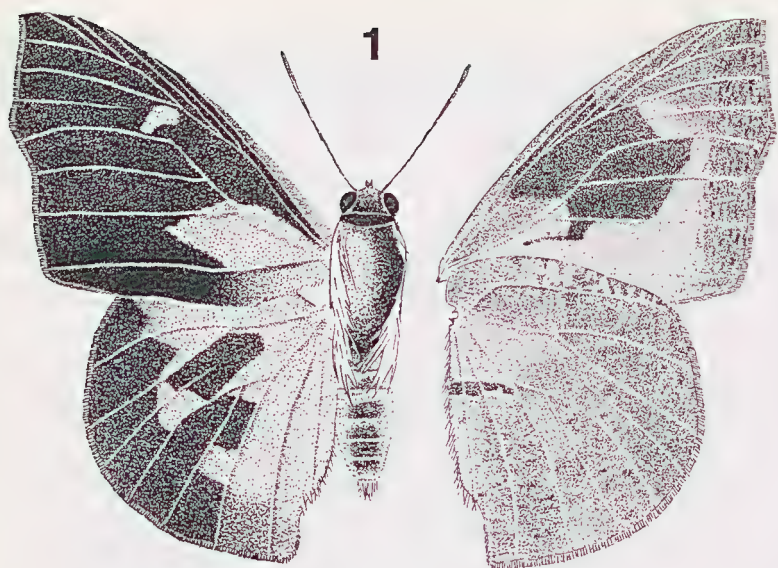
Holotype ♂, Bougainville, Papua New Guinea, Apr. 1904, A.S. Meek, Rothschild Bequest, BM 1939-1, in the Natural History Museum, London. Material examined: 1 ♂ (Fig. 1), Buin, Bougainville, Papua New Guinea, 11.xi.1987, L. Ring et al.; 1 ♀ (Fig. 2), Faisi Is., Solomon Is., 12.vii.1988, C.J. Muller. Both specimens in C.J. Muller collection.

Female (Fig. 2)

Fore wing above. Slightly developed between M1 and M3; concave between apex and M1; costa above light brown; black above, with large bright orange area extending from base to postmedian area and from posterior third of cell to inner margin; a smaller area of similar colouring extending from between R1 and R2 to junction of R3 and R5 and from near costa to M1; a bright orange area extending from post median area to subterminal area between M1 and M3; a small bright orange postmedian spot between M3 and CuA1, and a larger, similarly coloured spot in postmedian area tapering inward from near CuA1 to almost touch CuA2.

Fore wing below. Pale orange, deeper orange near base and in cell; a large purple suffused black area reaching from submedian area to median area and from near costa at Sc to CuA2, extended to post median area, sloping inward from M3 to CuA2, slightly concave between veins on terminal side; a small irregular black spot between CuA2 and 1A + 2A in submedian area close to junction of former vein and cubitus; apical and terminal areas broadly mottled dark brown with purplish suffusion, except for narrow light brown apical band tapering from costa to M3; heavy mottling on terminal edge of the band.

Hind wing developed at tornus; black above; basal two-thirds dark brown between M1 and costa and between M1 and M2, concave on inner side; a



C. J. M. M. M. M.



Figs. 1-2. *Liphyra brassolis bougainvilleanus*. 1, male; 2, female. Left hand view upperside, right hand view underside. Scale bar = 10 mm.

larger area of similar colouring between M2 and M3 in postmedian area, concave on inner side; small bright orange area between M3 and CuA1, strongly concave on both edges; slightly larger area of similar colouring between CuA1 and CuA2, marginally concave on inner edge.

Hind wing below mottled dark brown with purple suffusion; basal areas much paler between radial sector and inner margin and also with distinct irregular dark brown mottling between Sc + R1 and costa; indistinct brown area darker than overall ground cover between M3 and CuA2 in postmedian area; narrow black area extending from inner margin to 1A + 2A in submedian area and tapering toward median area from this vein to CuA2; a much narrower white bar lies below this black area.

Dimensions. Fore wing length: ♂ 41 mm; ♀ 48 mm.

Discussion

L. b. bougainvillensis had been recorded previously only from Bougainville; the collection of a further specimen from Faisi Is., Solomon Is., extends the known distribution of this subspecies. Only the wings of the female described here are available.

Acknowledgements

We would especially like to thank Les Ring for providing the male illustrated in this paper and D.L. Hancock for comments on an earlier draft of this manuscript.

Reference

SAMSON, C. and SMART, P. 1980. A review of the genus *Liphyra* (Lepidoptera: Lycaenidae) of Indo-Australia, with descriptions of two new subspecies from the Solomon Archipelago. *Aurelian* 1 (4): 6-16.